

## 2019 Winter U of MN SAVS CDE Exam

Choose the most correct answer to the question and fill in the answer on the scantron.

1. Arthritis is
  - a. breaking of the joints of an animal
  - b. inflammation of the joints of an animal
  - c. inflammation of the muscles of an animal
  - d. not a problem in dogs or cats
  
2. The term caudal refers to
  - a. to the head or in a direction towards the head of an animal
  - b. to the center or in a direction the middle of an animal
  - c. to the rear or in a direction toward the rear of an animal
  - d. to the top or in a direction toward the top of an animal
  
3. Muscles attached to the \_\_\_\_ of the sternum often account for over half of the bird's body weight.
  - a. Alula
  - b. Carpometacarpus
  - c. Cloaca
  - d. Keel
  
4. The \_\_\_\_\_ gland produces the tears that keep a dog's cornea moist.
  - a. Ciliary
  - b. Lacrimal
  - c. Tapetum
  - d. Utricle
  
5. Bottom feeders have a \_\_\_\_ mouth.
  - a. Superior
  - b. Inferior
  - c. Terminal
  - d. Sub-terminal
  
6. Dog hookworm is confirmed by checking
  - a. a blood sample
  - b. a urine sample
  - c. a feces sample
  - d. the dogs joints
  
7. The most serious blood parasite in birds is \_\_\_\_.
  - a. Proglottids
  - b. Knemidocoptes
  - c. Leucocytozoon
  - d. Dermanyssus
  
8. The phenotype of an animal is
  - a. All the genes possessed by the animal
  - b. The union of gametes carrying different alleles
  - c. The physical appearance of an animal
  - d. The term used to describe a heterozygous condition
  
9. A phenomenon known as \_\_\_\_\_ or masking occurs when some genes overwhelm the characteristics produced by other genes.
  - a. Epistasis
  - b. Estancia
  - c. Enology
  - d. Egestion

10. In birds, the urinary and sexual openings are in the\_\_\_\_\_.
- Cloaca
  - Ceca
  - Collop
  - Copra
11. Grooming consumes \_\_\_ percent of a cat's waking hours.
- 20 to 40
  - 30 to 50
  - 40 to 60
  - 50 to 70
12. Which of the following must be supplemented to a vegetarian diet fed to cats?
- vitamin A
  - thiamin
  - starch
  - vitamin D
13. Which vitamin deficiency is most commonly associated with the long term feeding of seeds to birds (choose one)?
- Iron
  - Vitamin A
  - Iodine
  - Choline
14. Which of the following is **not** a purpose for using fiber in companion animal diets?
- increases rate of passage of food
  - cheap feed ingredient
  - adds palatability to the diet
  - used in weight reduction diets
15. Cats do not have the ability to synthesize this essential fatty acid and it must be provided in the diet
- glycochalic acid
  - stearic acid
  - arachidonic acid
  - oleic acid
16. Siamese cats can be susceptible to toxicity of which of the following minerals?
- iron
  - cobalt
  - zinc
  - manganese
17. Which of the following is **not** a primary role of water?
- lubricates body joints and tissue
  - facilitates metabolic reactions in the body
  - source of energy
  - regulates body temperature
18. Because rabbits practice coprophagy, their requirement for which of the following vitamins is minimal?
- Vitamin A
  - B vitamins
  - Vitamin E
  - Vitamin D

19. If supplemental meat or table scraps are fed to adult dogs at maintenance, they should account for no more than
- 10% of the total diet
  - 25% of the total diet
  - 50% of the total diet
  - 75% of the total diet
20. The average litter size for cats is
- 1-3 kittens
  - 4-6 kittens
  - 7-8 kittens
  - 9-10 kittens
21. In pregnant bitches, fetal growth during the first 5 to 6 weeks of pregnancy is
- less than 30%
  - between 30-40%
  - between 40-50%
  - greater than 50%
22. Rabbits become sexually mature at
- 2 to 5 months of age
  - 5 to 8 months of age
  - 9 to 12 months of age
  - greater than one year of age
23. The term used for the birth process in rabbits is
- whelping
  - kindling
  - parturition
  - queening
24. Vaccinations to help safeguard a puppy's health are available for the following diseases except for
- vulvulus
  - rabies
  - parvovirus
  - hepatitis
25. Of the following breeds of cats, which is a longhaired breed?
- Manx
  - Sphynx
  - Abyssinian
  - Somali
26. Dogs should be bathed
- only when they become extremely dirty
  - every week
  - every month
  - once a year
27. Which of the following is in the working group of dogs?
- Italian Greyhound
  - Rottweiler
  - Bulldog
  - Basenji

28. Free-choice feeding in kennel settings may be beneficial because it
- increases nutrient intake by maximizing coprophagy
  - minimizes the noise associated with meal time
  - helps to detect anorexia
  - helps to detect overconsumption
29. An increase in nitrates and nitrites in fish tanks is due to
- dirty filters
  - accumulation of uneaten food
  - overpopulation of fish
  - all of the above
30. Cages for rabbits that weigh from 6 to 11 pounds should be
- 24 inches wide, 24 inches long and 14 inches high
  - 24 inches wide, 36 inches long and 18 inches high
  - 24 inches wide, 48 inches long and 18 inches high
  - 30 inches wide, 48 inches long and 24 inches high
31. Which of the following materials is least desirable for feed containers for large parrot-type birds?
- plastic
  - glass
  - ceramic
  - stainless steel
32. The organ within the ear that enables the cat to hear sounds in the ultrasonic range is
- nicitating membrane
  - olfactory mucosa
  - cochlea
  - Jacobson's organ
33. Muscles attach to bones by means of
- ligaments.
  - tendons.
  - bones.
  - gristle.
34. Lower back vertebrae are called
- caudal.
  - cervical.
  - lumbar
  - thoracic..
35. The adrenal glands are located
- at the base of the brain.
  - on the thorax.
  - above the kidneys.
  - within the thyroid.
36. The \_\_\_\_\_ is a tube supported by C – shaped cartilage rings.
- alveoli
  - capillary
  - pleura
  - trachea

37. The protective covering of the kidneys and the ureters is the
- renal fascia.
  - renal capsule.
  - renal cortex.
  - renal pyramids.
38. The dog's withers is located
- at the top of the head.
  - at the base of the tail.
  - at the upper thigh.
  - at the top of the shoulder.
39. The Lhasa Apso has
- a wiry undercoat and a soft topcoat.
  - dark ears, feet and tail.
  - a tapering muzzle.
  - a tail that curves up over its back.
40. Tabby refers to
- white, black and orange patches.
  - a solid colored cat.
  - an orange and black pattern.
  - any colored striped pattern.
41. What part of a bird's gastrointestinal system stores and softens food before it reaches the stomach?
- Ventriculus
  - Cloaca
  - Crop
  - Furcula
42. Which compartment of the heart forces the blood into the systemic circulation?
- right ventricle
  - left ventricle
  - right atrium
  - left atrium
43. Which is a function of the pancreas?
- fat digestion
  - fiber degradation
  - bile production
  - HCl production
44. During inspiration, what does the diaphragm do?
- contracts, drawing it closer to the thorax
  - contracts, drawing it closer to the abdomen
  - relaxes, allowing the chest to expand
  - relaxes, lowering the pressure in the chest
45. To properly apply a splint for a radial/ulnar fracture in a dog, which joints must be immobilized to provide fracture stability?
- carpus and elbow
  - shoulder and elbow
  - metacarpus and elbow
  - tarsus and elbow

46. Which is produced in the medulla of the adrenal gland?
- A. Aldosterone
  - B. Epinephrine
  - C. Insulin
  - D. Cortisol
47. What establishes the basic rhythm of the mammalian heart, also known as the pacemaker?
- A. Papillary muscles
  - B. Bundle of His
  - C. Atrioventricular node
  - D. Sinoatrial node
48. Which term means “abnormal accumulations of fluid in the abdomen”?
- A. Ascites
  - B. Atresia
  - C. Achalasia
  - D. Ascariasis
49. A cataract is a cloudiness of what part of the eye?
- A. Lens
  - B. Retina
  - C. Choroid
  - D. Cornea
50. What organ stimulates the pituitary gland to act?
- A. Hypothalamus
  - B. Neurohypophysis
  - C. Hypophysis
  - D. Hypothalamus

## 2019 Winter U of MN SAVS CDE Exam Key

1. B  
2. C  
3. D  
4. B  
5. B  
6. C  
7. C  
8. C  
9. A  
10. A  
11. B  
12. A  
13. B  
14. C  
15. C  
16. D  
17. C  
18. B  
19. A  
20. B  
21. A  
22. B  
23. B  
24. A  
25. D

26. A  
27. B  
28. B  
29. D  
30. B  
31. A  
32. C  
33. B  
34. C  
35. C  
36. D  
37. B  
38. D  
39. D  
40. D  
41. C  
42. B  
43. A  
44. B  
45. A  
46. B  
47. D  
48. A  
49. A  
50. A

2019 Winter U of MN Invitational Practicum #1 Anatomy

Put your answers on the bottom half of the back of the scantron.

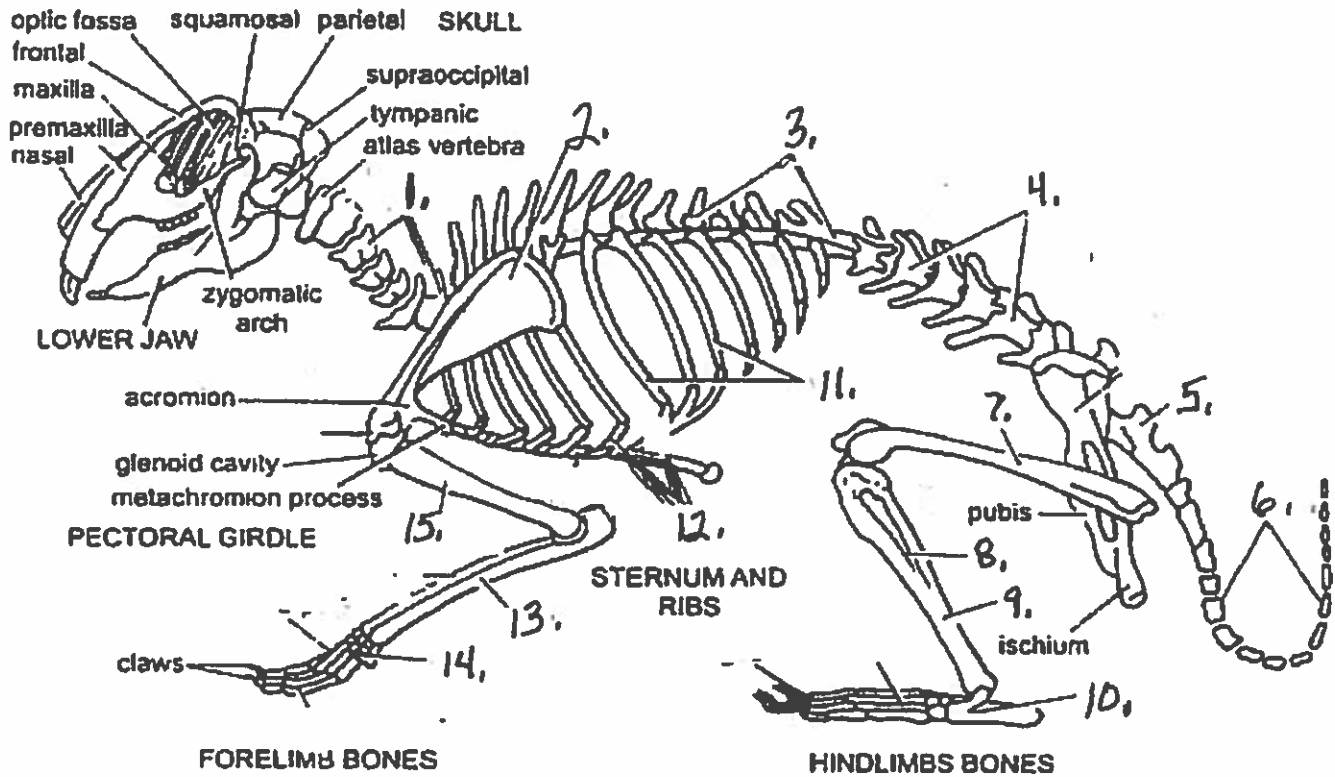
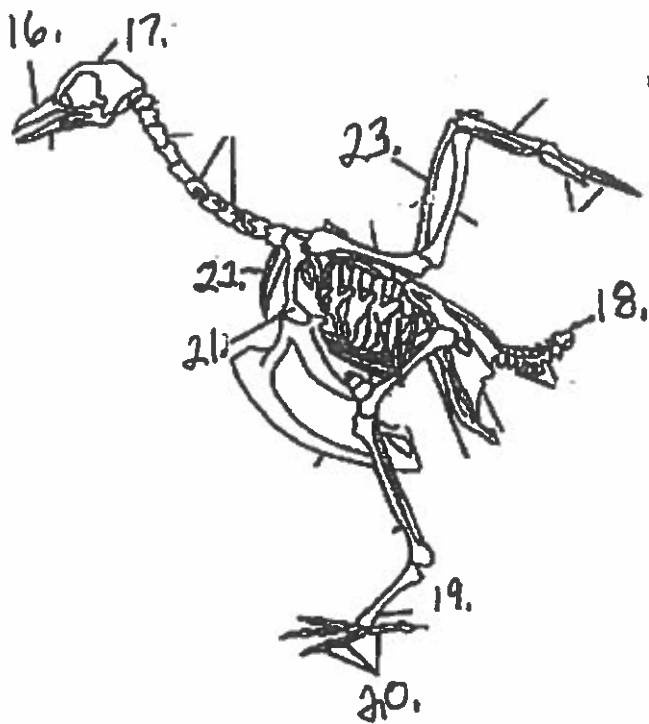
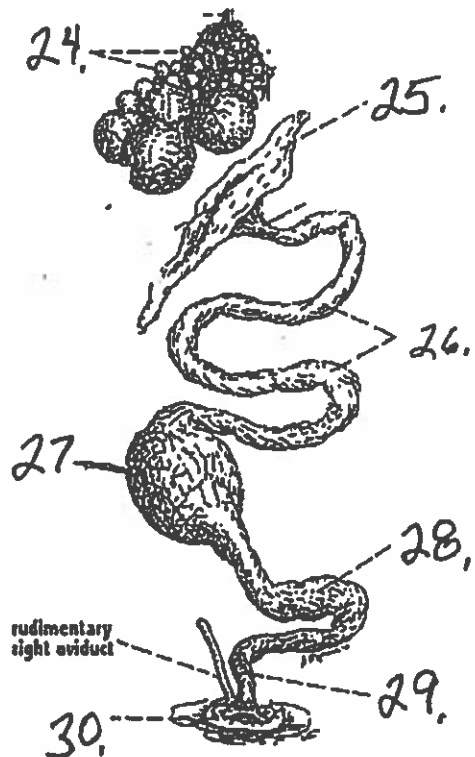


Fig. 29.8. Rabbit. Complete skeleton in lateral view.

Avian Skeletal



Avian Reproduction





**2019 SAVS Anatomy Practicum #1 Key**

1. 153
2. 168
3. 171
4. 159
5. 167
6. 152
7. 156
8. 157
9. 172
10. 170
11. 166
12. 169
13. 173
14. 151
15. 158
16. 260
17. 254
18. 266
19. 270
20. 265
21. 253
22. 257
23. 267
24. 455
25. 452
26. 454
27. 453
28. 458
29. 459
30. 451

**2019 University of Minnesota Winter Invitational  
SAVS Tools and Equipment Practicum #2 Key**

- 31. 679**
- 32. 670**
- 33. 665**
- 34. 664**
- 35. 667**
- 36. 655**
- 37. 651**
- 38. 662**
- 39. 673**
- 40. 660**
- 41. 684**
- 42. 680**
- 43. 682**
- 44. 657**
- 45. 675**

**2019 University of Minnesota Winter Invitational  
Small Animal/Veterinary Science Problem Solving Practicum #3**

**Bubble in the best answer on the Assessment and Solutions section on the front side of scantron.  
60 points possible (5 point per correct answer)**

1. You are asked to label the following prescription for Dr. Daniels: *Place (3) drops AU BID x 10 d.*  
What will you place on the label?

- a. Place 3 drops in both eyes twice a day for ten days.
- b. Place 3 drops in both eyes once a day for ten days.
- c. Place 3 drops in both ears every other day for ten days.
- d. Place 3 drops in both ears twice a day for ten days.

2. Which of the following injections has the fastest absorption rate?

- a. Subcutaneous
- b. Intramuscular
- c. Intravenous

3. The abbreviation for after meals is:

- a. p.c.
- b. q.d.
- c. o.d.
- d. o.u.

4. 0.2 L = \_\_\_\_\_ ml

- a. 2
- b. 20
- c. 200
- d. 2000

5. The abbreviation for right ear is:

- a. a.d.
- b. a.s.
- c. o.u.
- d. a.c.

6. The abbreviation for Orally, by month is:

- a. a.c.
- b. p.o.
- c. p.r.
- d. o.u.

7. You buy an aquarium that weights 36 pounds, if it holds 18 gallons of water (1 gallon weighs 8 pounds). What would the total weight of the aquarium filled with water be?
- 36 lbs.
  - 144 lbs.
  - 180 lbs.
  - 196 lbs.
8. How many tablets would you need to fill the following order: Rx Metronidazole 250 mg tablet, 1 tablet, p.o., t.i.d X 7 days
- 7
  - 14
  - 21
  - 28
9. You are advised to give your Black Lab 400 mg of amoxicillin b.i.d. and the vet gives you 200 mg tablets. How many tablets will you administer in one day?
- 2
  - 4
  - 6
  - 8
10. A customer asks much they should feed their 5 pound Chihuahua. The dog food label says to feed  $\frac{1}{4}$  cup of dog food for every pound of weight twice a day. How much should they feed each day?
- $1\frac{1}{4}$  cups
  - 2 cups
  - $2\frac{1}{2}$  cups
  - 3 cups
11. As a grooming assistant you are making 10.50 an hour. You receive a raise of 12%. How much are you now making per hour?
- \$ 10.62
  - \$ 11.55
  - \$ 11.76
  - \$ 11.95
12. The goal of your pet supply business is for a 45% profit margin. What would you have to sell a bottle of shampoo for if your cost is \$ 3.80?
- \$ 5.31
  - \$ 5.51
  - \$ 5.71
  - \$ 5.91

**2019 University of Minnesota Winter Invitational  
Small Animal/Veterinary Science Problem Solving Practicum #3 Key**

- 1. d**
- 2. c**
- 3. a**
- 4. c**
- 5. a**
- 6. b**
- 7. c**
- 8. c**
- 9. b**
- 10.c**
- 11.c**
- 12.b**

## 2019 Sm An/Vet Sci U Winter ID Key

1. Chinchilla (604)
2. Molly (312)
3. Schnauzer (Mini) (132)
4. Siberian (218)
5. Mini Lop (508)
6. Ball Python (601)
7. German Shorthaired Pointer (119)
8. Cherry Barb (306)
9. Boston Terrier (106)
10. Sun Conure (409)
11. Norwegian Forest Cat (210)
12. Hedgehog (613)
13. Welsh Corgi (138)
14. Corydora Catfish (309)
15. Basset Hound (102)
16. Siamese (217)
17. Weimaraner (137)
18. Crested Gecko (606)
19. French Bulldog (117)
20. Cockatiel (405)
21. Shetland Sheepdog (133)
22. Havana (506)
23. Dachshund (114)
24. Harlequin Rasbora (311)
25. Bernese Mountain Dog (104)
26. Rex (Cornish and Devon) (214)
27. Chihuahua (111)
28. Amazon Parrot (402)
29. English Springer Spaniel (116)
30. Red-Eared Slider (617)
31. Shih Tzu (134)
32. Flemish Giant (505)
33. Vizsla (136)
34. Neon Tetra (313)
35. Rhodesian Ridgeback (130)
36. Gerbil (610)
37. Maltese (124)
38. Polish (511)
39. Brittany Spaniel (108)
40. Russian Blue (215)
41. Pac Man Frog (614)
42. Ragdoll (213)
43. Collie (113)
44. Beta (303)
45. Tonkinese (220)
46. Havanese (122)
47. Budgerigar (403)
48. Egyptian Mau (206)
49. Dwarf Hotot (502)
50. Newfoundland (126)

**2019 University of Minnesota Winter Invitational**

**SAVS Tools and Equipment Practicum #2**

**60 Total Possible Points (4 points each)**

**Bubble in the best answer on the bottom Identification section, on the back side of the scantron.**

**60 points possible (5 point per correct answer)**

31.



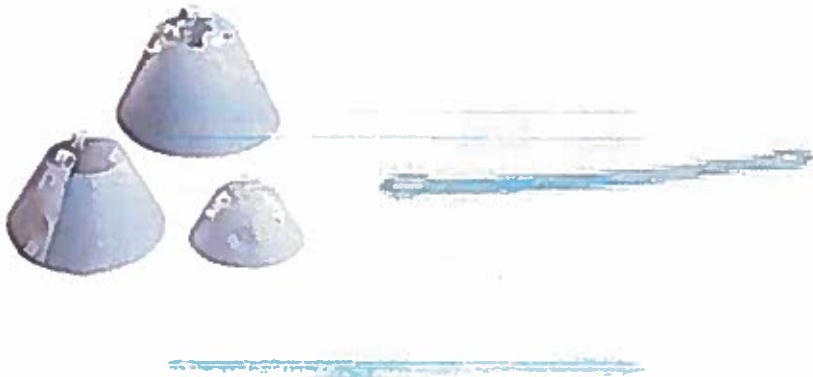
32.



33.



34.



35.

36.



37.



38.



39.



40.



41.



42.



43.



44.



45.

