

**State FFA 2014 Career Development Event
Floriculture Exam**

Mark your answer directly onto the scantron.

- 1) Which part of the plant flower contains ovules and when fertilized become seeds?
 - A) Anther
 - B) Filament
 - C) Ovary
 - D) Stigma

- 2) Gibberellins stimulate growth by
 - A) Stimulating cell enlargement
 - B) Cell elongation
 - C) Cell division
 - D) Hastening ripening

- 3) Producing plants from rooted cuttings are a type of _____ propagation.
 - A) Asexual
 - B) Bisexual
 - C) Sexual
 - D) Unisexual

- 4) Seedlings are held by the first true leaves instead of the stem when transplanting because
 - A) There are no cotyledons to grasp
 - B) The stems are too slippery and seedlings are dropped and lost
 - C) The stems may be bruised in handling and cause death of the plant
 - D) This bruises the leaves which stimulates growth

- 5) A process used by growers to produce well branched, compact plants with many flowers is called?
 - A) Heading Back
 - B) Compacting
 - C) Pinching
 - D) Snipping

- 6) These insects are identified by the cottony material found on stems and along leaf veins:
 - A) Aphids
 - B) Mealy bugs
 - C) Spider mites
 - D) Whiteflies

- 7) When flowers look too small for their container, the design principle that was NOT followed is:
 - A) Proportion
 - B) Focal point.
 - C) Repetition.
 - D) Rhythm.

- 8) Which flowers are used as a form flower?
 - A) Protea
 - B) Carnations
 - C) Gladiolus
 - D) Baby's breath

- 9) The procedures used to break dormancy and to establish some growth before bulbs are brought into a warm room for flowering are called:
- A) Bolting.
 - B) Cooling.
 - C) Forcing.
 - D) Heating.
- 10) Most bedding plants are:
- A) Annuals.
 - B) Biennials.
 - C) Triennials
 - D) Perennials.
- 11) The four main parts of a completed flower are:
- A) Anthers, filaments, receptacle, stamens.
 - B) Receptacle, ovary, stamens, style.
 - C) Stamens, sepals, pistil, petals.
 - D) Stigma, ovule, style, ovary.
- 12) The term "foot candle" is a unit of measure for
- A) photoperiod.
 - B) light duration.
 - C) light intensity.
 - D) light quality.
- 13) The process by which the energy of sunlight is converted into chemical energy is known as:
- A) phototropism
 - B) photosynthesis
 - C) photoperiodism
 - D) transpiration
- 14) How many pounds of nitrogen are in a 50 pound bag of 15-10-10?
- A) 5
 - B) 15
 - C) 10
 - D) 7.5
- 15) Large leaves are often removed from a geranium plant in late winter to:
- A) permit more light to reach young growth
 - B) reduce space requirements
 - C) reduce disease problems
 - D) force the plant to set bud
- 16) A shade cloth is pulled over a greenhouse to:
- A) improve bud count
 - B) increase temperature
 - C) elongate stems for taller plants
 - D) decrease sunlight allowed in
- 17) When a plant has elongated internodes and tends to be spindly and weak the problem is:
- A) salt damage
 - B) nitrogen deficiency
 - C) *Botrytis*
 - D) lack of light

- 18) The soil pH level primarily controls:
- A) availability of essential plant nutrients
 - B) activity of soil-borne disease
 - C) moisture absorption by roots
 - D) soil temperature
- 19) Which statement is true concerning wire and ribbon sizes
- A) The larger the number the smaller the wire and wider the ribbon
 - B) Larger the number the larger the wire and narrower the ribbon
 - C) The larger the number the larger the wire and the wider the ribbon
 - D) The larger the number the smaller the wire and narrower the ribbon.
- 20) When plant roots have completely filled its pot and become overly crowded the plant is said to be
- A) over-potted.
 - B) mature.
 - C) over-rooted.
 - D) root bound.
- 21) There are 3 _____ Nutrients.
- A) growth hormones
 - B) trace elements
 - C) primary nutrients
 - D) secondary nutrients
- 22) The Focal Point of a design is located?
- A) At the outside edge.
 - B) At the top.
 - C) High in the middle portion.
 - D) In the lower center.
- 23) The secondary colors are
- A) Red, yellow, and blue.
 - B) Orange, green, violet
 - C) Red, green, and blue
 - D) Blue, orange, and violet
- 24) pH measures the soil's acidity or alkalinity on a scale of 1 to 14; 1 to 6 indicates a(an) _____, 7 is neutral, and 8 to 14 indicates a(an) _____.
- A) acid, base
 - B) alkaline, base
 - C) base, acid
 - D) base, alkaline
- 25) The best soil temperature for germinating most seeds is:
- A) 50 to 60° F
 - B) 75 to 80° F
 - C) 89 to 90° F
 - D) 65 to 70° F
- 26) A rhizome is an underground
- A) leaf
 - B) root
 - C) stem
 - D) tuber

- 27) Biological control of plant pests is:
A) the use of man-made chemicals to control pests
B) using living natural organisms or materials for control of plant pests
C) the oldest pest-control method
D) is not practical in the greenhouse
- 28) With regard to pesticides LD stands for
A) legal disposition of chemical
B) legal deployment of residue
C) lethal dispersion to humans
D) lethal dose amount to cause death
- 29) _____ is the term applied to the length of time that light shines on a plant each day.
A) phototropism
B) photoperiod
C) light compensation point
D) light saturation point
- 30) The major auxin produced in plants is:
A) Ondole-3-butyric acid (IBA)
B) Naphthalene acetic acid (NAA)
C) Indole-3-adetic acid (IAA)
D) Ethylene
- 31) Foam materials used by floral retailers should be
A) presoaked thoroughly before use
B) refrigerated
C) soaked after the arrangements are made
D) watered by the customer in the home
- 32) Wire sizes most often used by florists vary from _____ to _____.
A) 04-15
B) 00-10
C) 18-30
D) 32-42
- 33) The florist wire is used in corsages and bout construction to:
A) Hold the flowers in the correct position
B) Prevent the flowers heads from breaking off the stems
C) Make arranging easier
D) All of the above
-
- 34) When indoor plants are over watered,
A) they droop their leaves
B) their leaves drop off
C) their leaves turn yellow
D) all of the above
- 35) Plastic tubes with rubber stoppers having holes in them for the insertion of live stems and a point on the end are called:
A) Oasis
B) Reservoirs
C) Aqua picks
D) Aqua tubes

36) Charcoal is used in a terrarium for its:

- A) color
- B) drainage ability
- C) ability to absorb bacterial odors
- D) none of these

37) The cool or cyanic colors on a typical color wheel consist of :

- A) red, red-orange, orange, yellow-orange
- B) yellow-green, yellow, yellow-orange
- C) green, blue-green, blue, blue-violet
- D) red-violet, red, violet, red-orange

38) If a plant's Latin name is Hedra helix, helix is

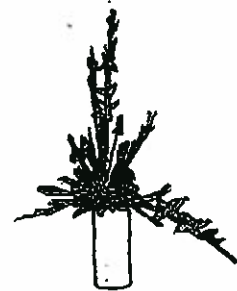
- A) the generic name
- B) the species name
- C) the family name
- D) the variety name

39) A leaf petiole is:

- A) the tip of the leaf
- B) the base plate of a leaf
- C) attaches the leaf to the stem
- D) attaches the flower to the receptacle

40) The type of floral arrangement in the diagram to the right is a:

- A) inverted T design
- B) vertical design
- C) asymmetrical triangle design
- D) crescent design



41) Most houseplants like a humidity in the range of

- A) 10-35%.
- B) 30-55%.
- C) 50-75%.
- D) 75-100%.

42) When adding black to a hue a _____ is created?

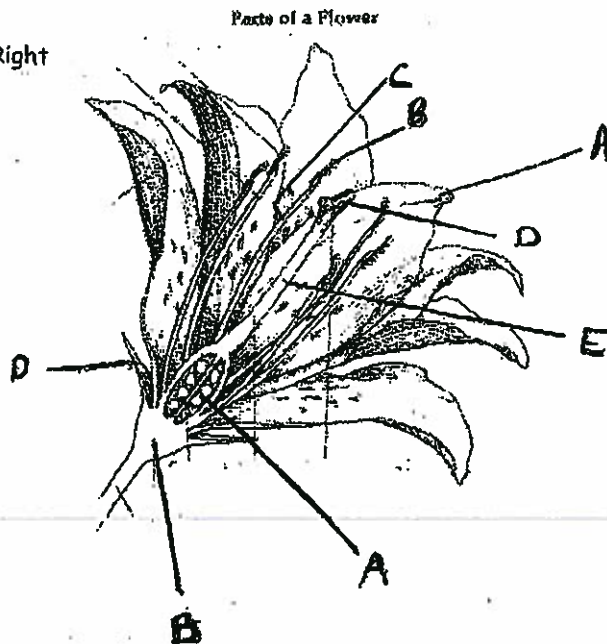
- A) Tone
- B) Hue
- C) Shade
- D) Tint

43) The principle of arranging which involves the repetition of shapes, forms, and/or lines; through a progression of small, medium, and large flowers; through a progression of color from light to dark; or through a continuous line movement is:

- A) focal point
- B) rhythm
- C) harmony
- D) balance

- 44) Two colors directly opposite one another on the color wheel are termed:
- A) Balanced
 - B) Split complementary
 - C) Direct complementary
 - D) Analogous harmony
- 45) The piercing method of wiring flowers is used on flowers with a large calyx such as:
- A) chrysanthemum and roses
 - B) carnations and roses
 - C) lilies and roses
 - D) iris and roses
- 46) Which of the following is a filler flower:
- A) Wax Flower
 - B) Gerbera
 - C) Dendrobium Orchid
 - D) Italian Ruscus
- 47) _____ is a rigid greenhouse covering that is made of double layers, has high light transmission, is flame retardant and has the strongest resistance to breakage.
- A) Polyethylene
 - B) Fiberglass
 - C) Polycarbonate
 - D) Glass

For #48 - 57 Use the diagram to the Right



- 48) Style
- 49) Stigma
- 50) Anther
- 51) Filament
- 52) Ovary
- 53) Stamen
- 54) Petal
- 55) Receptacle
- 56) Pistil
- 57) Sepal

C - D, E, & A
TOGETHER

E - D & C
TOGETHER

- 58) Which of the following is a shade-loving flower?
- A. Marigold
 - B. Verbena
 - C. Chrysanthemum
 - D. Fibrous Begonia
- 59) The typical length of florist wire is:
- A. 18 inches
 - B. 12 inches
 - C. 24 inches
 - D. 6 inches
- 60) When using the ratio markup method, a 3.5 to 1 item with the total wholesale value of the material costing \$18.63 would retail for:
- A. \$6.53
 - B. \$65.21
 - C. \$55.89
 - D. \$62.35

**State FFA 2014 Career Development
Event Floriculture Exam Answers**

- | | |
|-------|-------|
| 1. C | 31. A |
| 2. B | 32. C |
| 3. A | 33. D |
| 4. C | 34. D |
| 5. C | 35. C |
| 6. B | 36. C |
| 7. A | 37. C |
| 8. A | 38. B |
| 9. C | 39. C |
| 10. A | 40. C |
| 11. C | 41. C |
| 12. C | 42. C |
| 13. B | 43. B |
| 14. D | 44. C |
| 15. A | 45. B |
| 16. D | 46. A |
| 17. D | 47. C |
| 18. A | 48. E |
| 19. C | 49. D |
| 20. D | 50. B |
| 21. D | 51. C |
| 22. B | 52. A |
| 23. D | 53. E |
| 24. A | 54. A |
| 25. D | 55. B |
| 26. C | 56. C |
| 27. B | 57. D |
| 28. D | 58. D |
| 29. B | 59. A |
| 30. C | 60. B |

2014 FFA State Floriculture
Individual Practicum Scenario

Create a wearable corsage that consists of 3 mini-carnations, Italian ruscus, and wax flower. A bow must be incorporated into the corsage. Finally, place the completed corsage in the plastic bag so it is ready for sale and complete the pricing sheet.

If you have questions before you start, please speak to the advisor in the room.

Prices for Materials:

Materials	Cost	Unit
Mini-Carnation	\$0.50	per stem
Italian Ruscus	\$0.95	per stem
Wax flower	\$0.40	per stem
Ribbon	\$0.05	per foot
Wire	\$0.02	per wire
Floral tape	\$0.02	per foot
Plastic Bag	\$0.10	per bag
Pin	\$0.10	per pin

The mark up factor for the arrangement is 300%

2014 State FFA Floriculture Practicum Corsage Itemized Bill

Name _____ Chapter: _____

Plant Materials (Flowers/Foliage)	Quantity Used	Unit Cost	Total

Total Plant Materials Cost _____

Other Materials	Quantity Used	Unit Cost	Total

Total Other Materials Cost _____

Total Materials Cost	
Mark up Factor	
Subtotal	
Sales Tax (6.875%)	
Final Retail Cost	

**State FFA Floriculture CDE
Corsage Practicum
Score Card: 100 points**

Name _____ Chapter _____

Category	Possible	Earned
Wire and Taping	15	
Use of Ribbon	20	
Design	20	
Wearability	20	
Packaging	10	
Pricing	15	
Total	100	